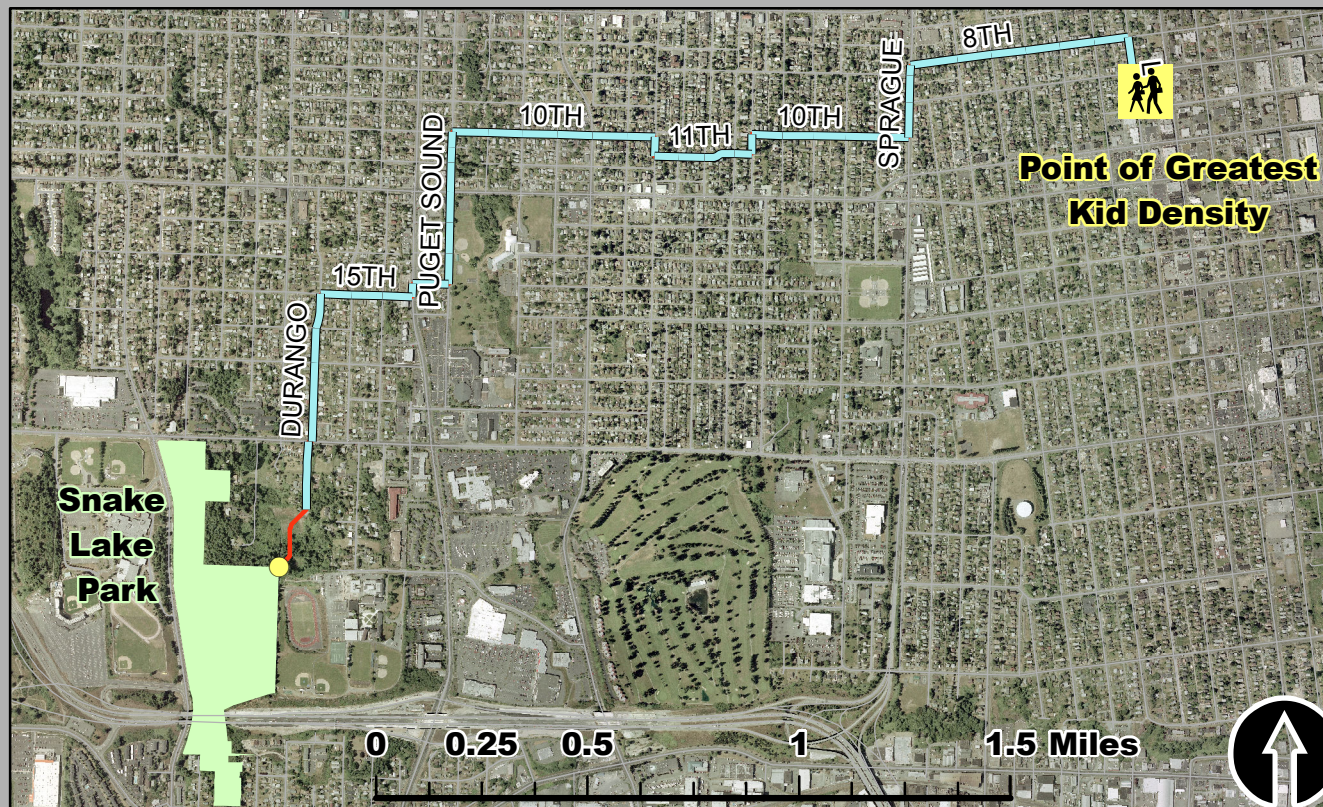




City of  
Tacoma

# Route to Snake Lake

## City of Tacoma and Metro Parks Plan



This map shows a "Least Cost Path" analysis of the Tacoma area, with a goal of connecting clusters of kids with large city parks. The highlighted route here is a proposal for the city to develop a link between the highest density of urban youth (highlighted with yellow) with the Snake Lake Park (highlighted in green). This spatial analysis was conducted using a euclidean distance vs. cost distance and simple map algebra. While the corridor selected does run along existing low traffic streets, a small trail or access road will need to be constructed (highlighted in red).

Coordinate System: NAD\_1983\_HARN\_  
StatePlane\_Washington\_South\_FIPS\_4602\_Feet  
Data: Wagda, US Census

Created By: Woody Shaufler  
Date: April 26, 2015  
University of Washington Tacoma

