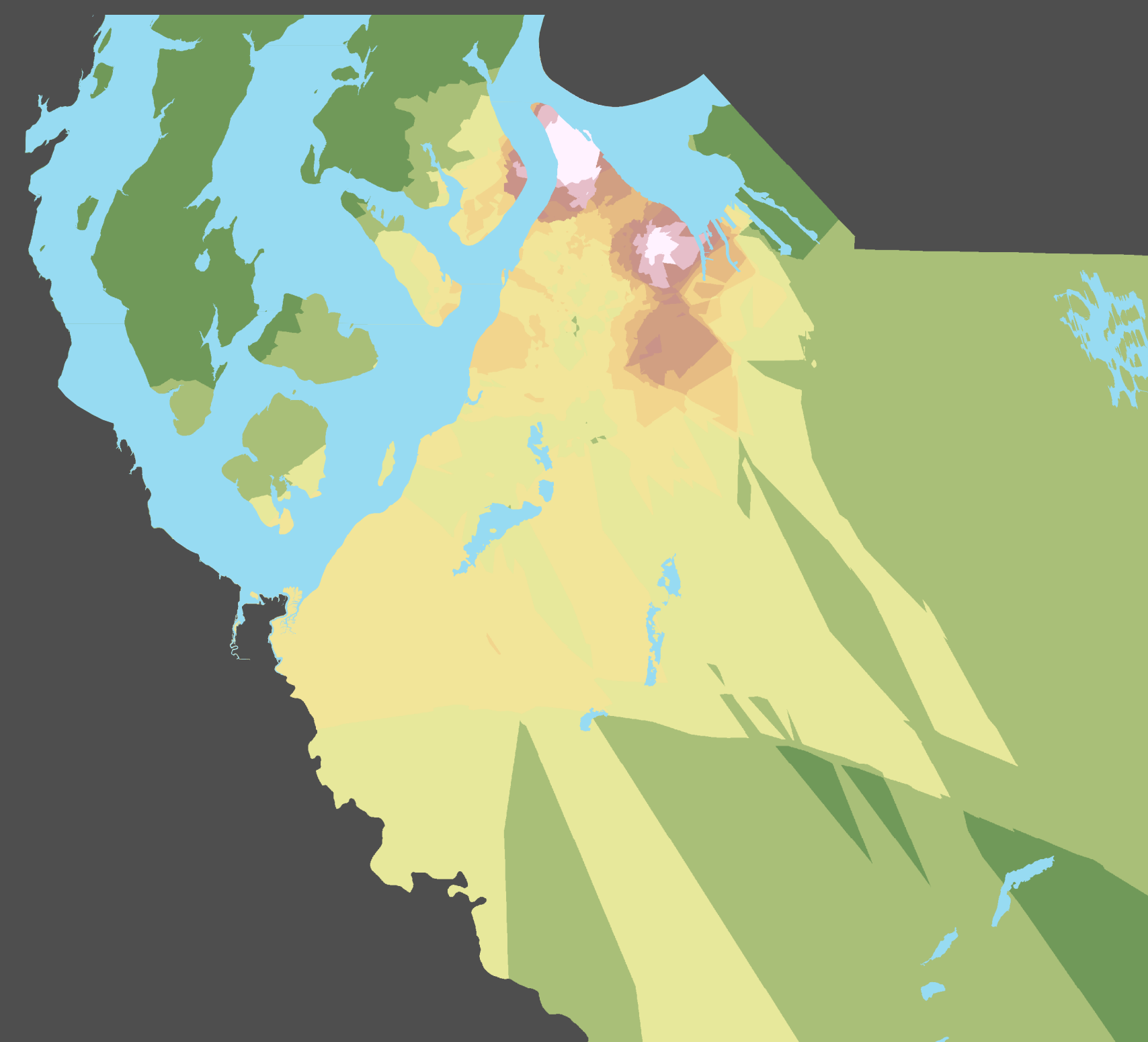
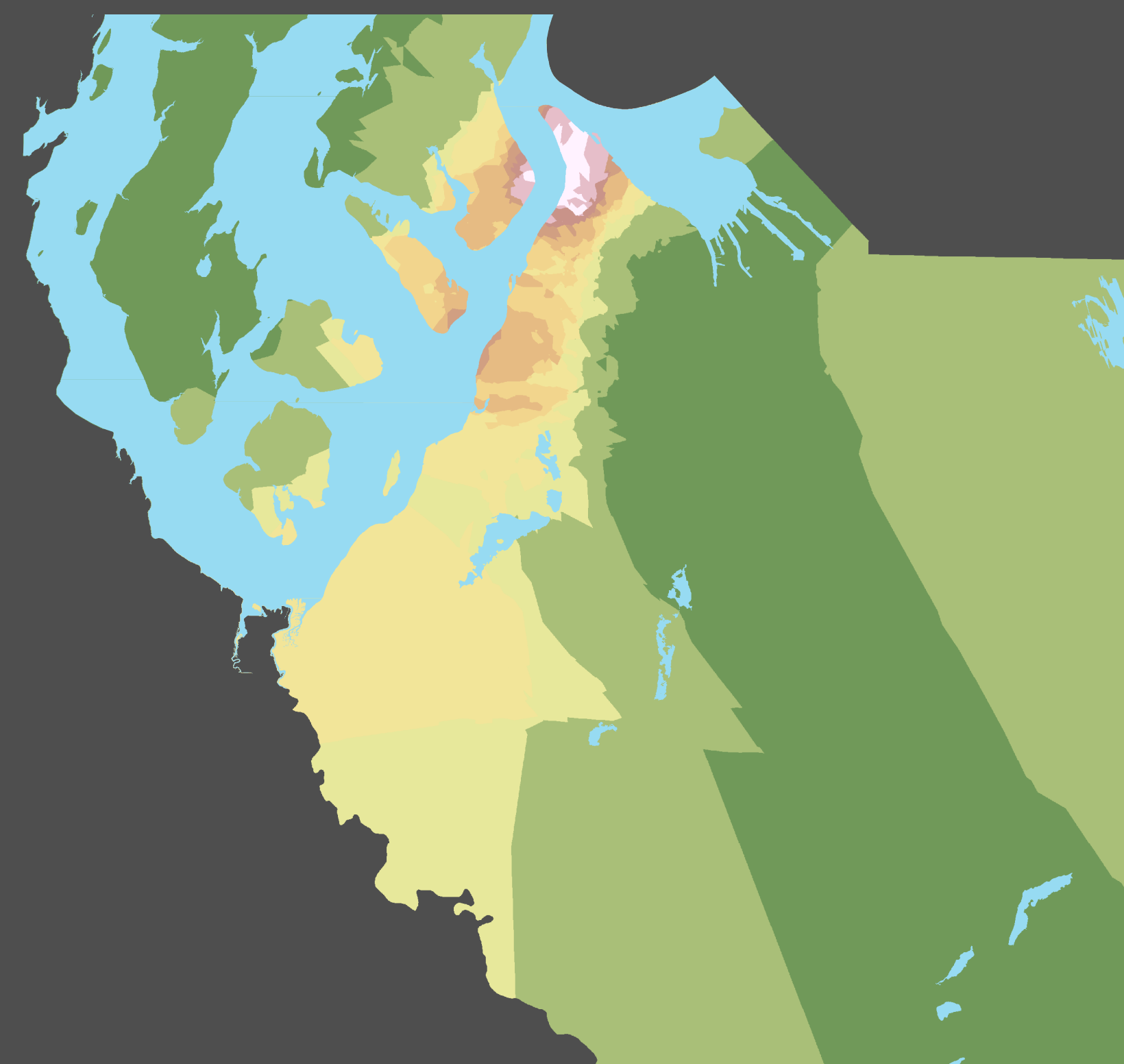


Pierce County Toxic Soil Analysis

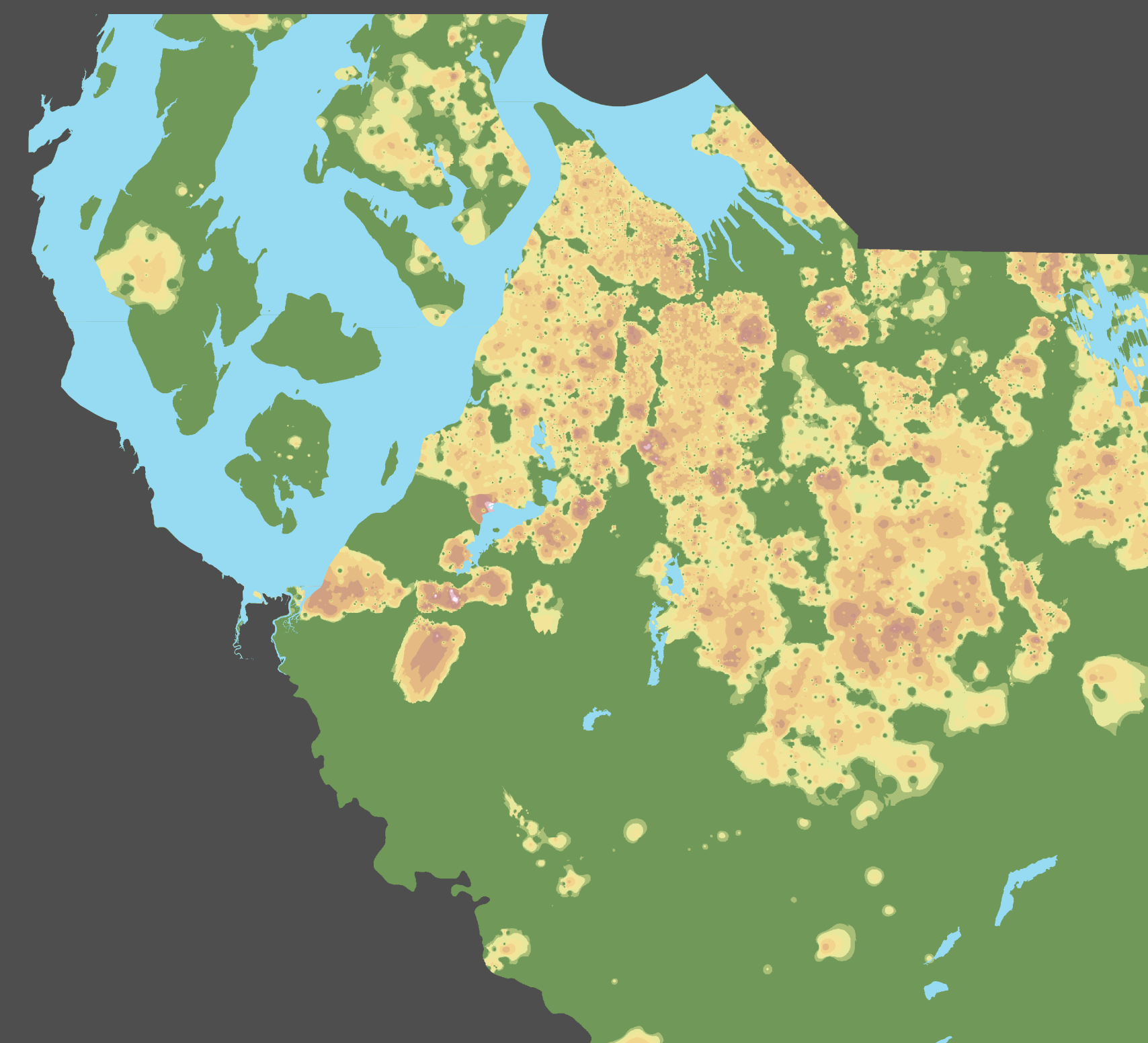
Youth Exposure to Lead and Arsenic



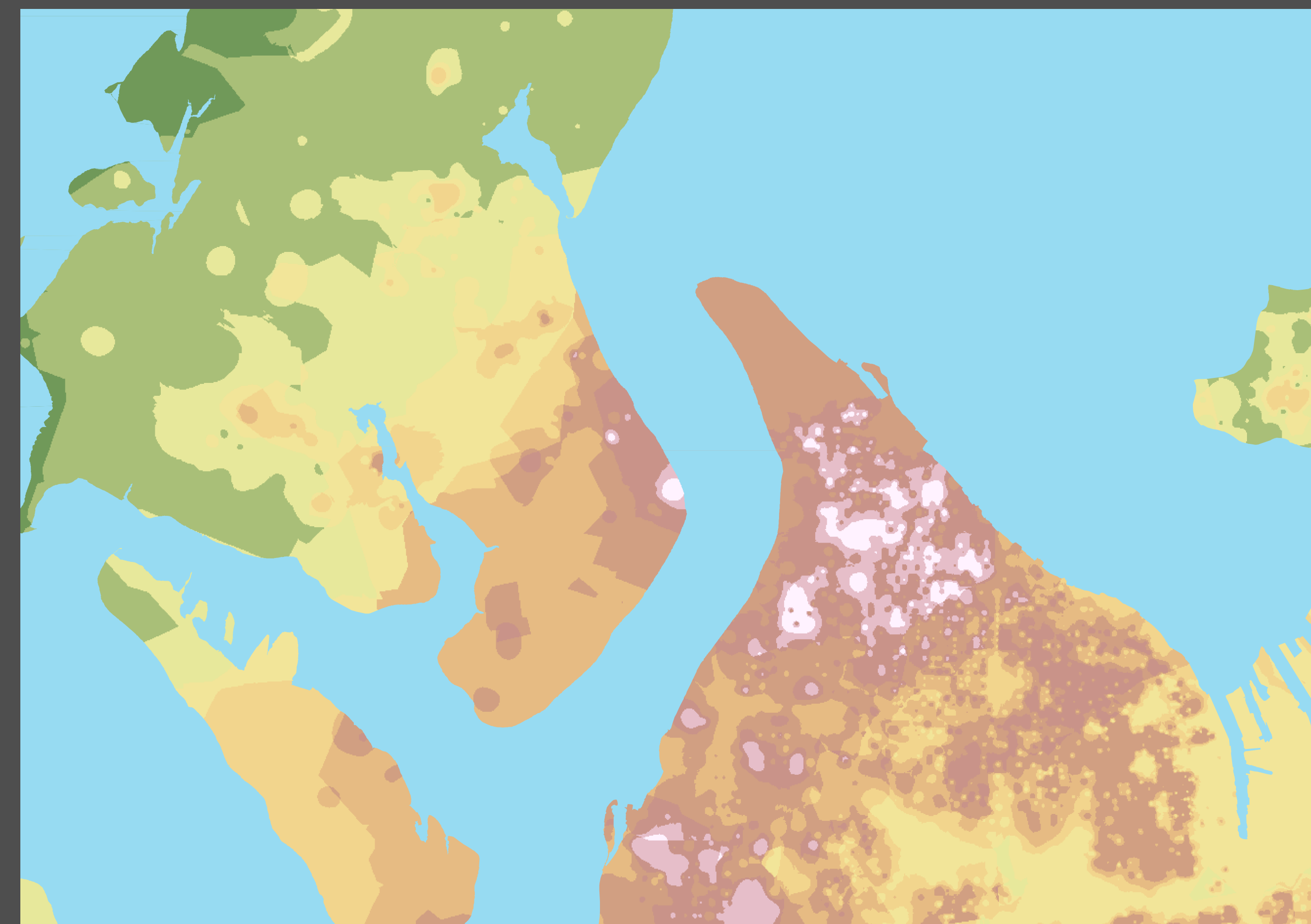
1A: Lead Contamination



1B: Arsenic Contamination

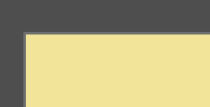
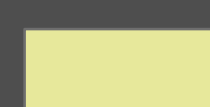


1C: Density of Children



1.D: Areas for Toxic Remediation

Low



Med



High



This map analyzes soil samples that were taken throughout Pierce County, in an effort to remediate soil contamination produced by the former Asarco smelter located in Tacoma.

Fig. 1A

This figure shows concentrations of Lead soil contaminants.

Fig. 1B

This figure shows concentrations of Arsenic soil contaminants

Fig. 1C

Once Arsenic and Lead levels were evaluated a secondary analysis was conducted using US Census Block Data (2010) to estimate density of children (under the age of 10) per square mile.

Fig. 1D

Using the previous analyses arsenic contamination, lead contamination, and kid density, a final evaluation was performed to determine areas of high soil toxins and child density. The map generated from this process outlines areas in need of toxic remediation.

Coordinate System: NAD_1983_HARN_StatePlane_Washington_South_FIPS_4602_Feet
Sources: U.S. Census (2010), WAGDA,

Produced by: Woody Shaufler
Contact: shaufw2@uw.edu
University of Washington -Tacoma